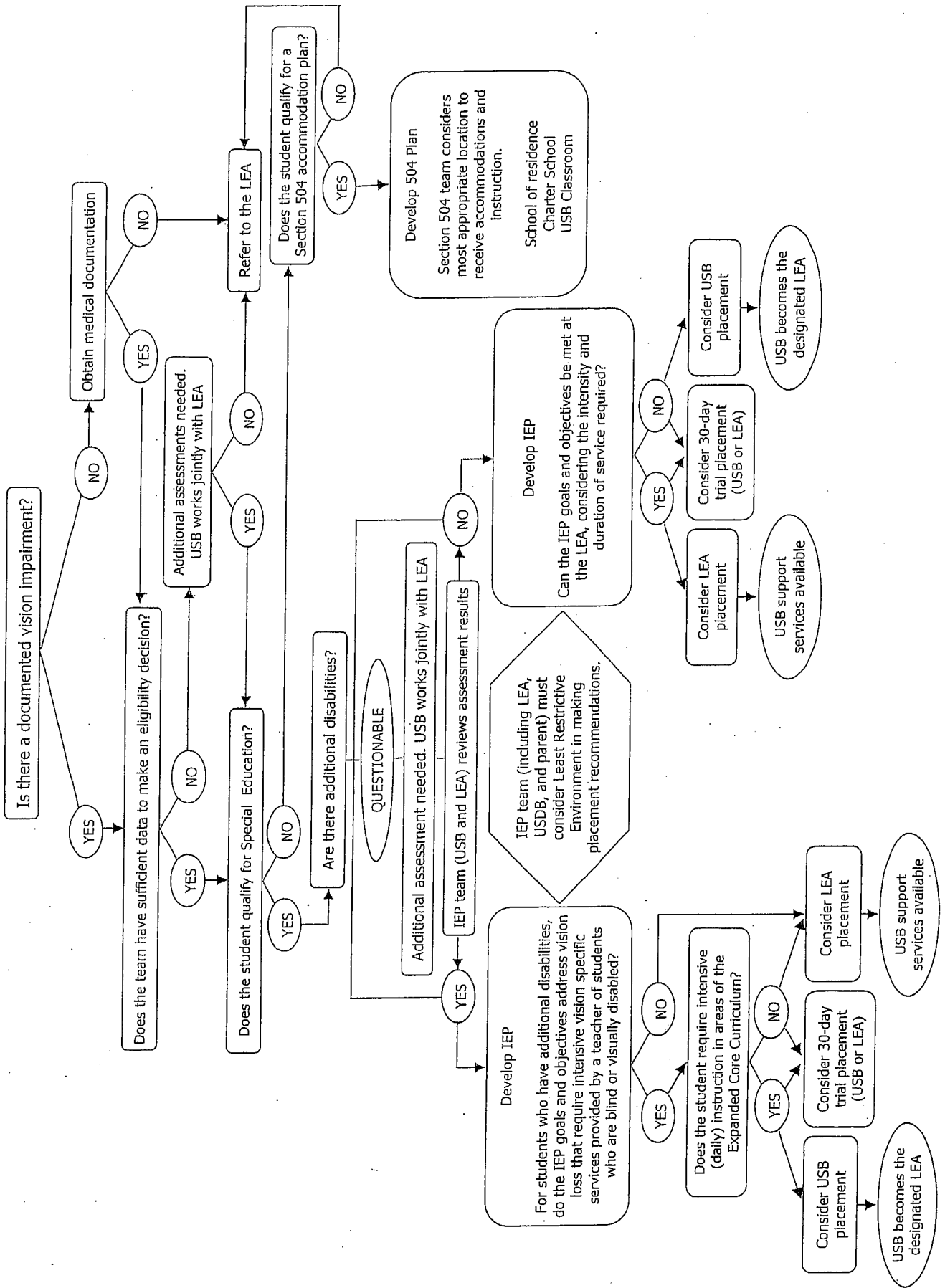


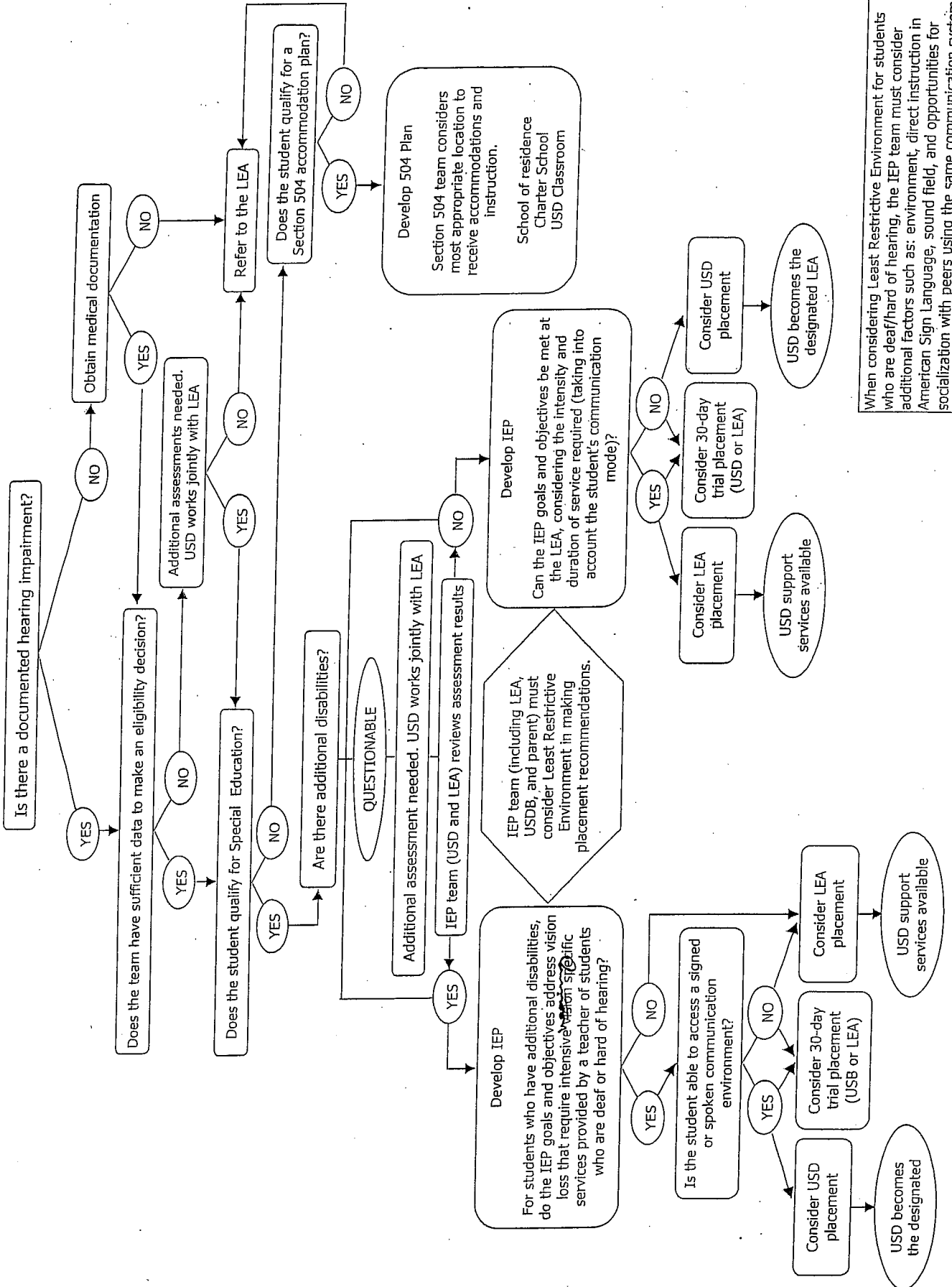
Addendum

Decision Trees

Blind/Visually Impaired Outline



Deaf/Hard of Hearing Outline



When considering Least Restrictive Environment for students who are deaf/hard of hearing, the IEP team must consider additional factors such as: environment, direct instruction in American Sign Language, sound field, and opportunities for socialization with peers using the same communication system.

Deafblind Outline

